



*PharmaSafe*TM

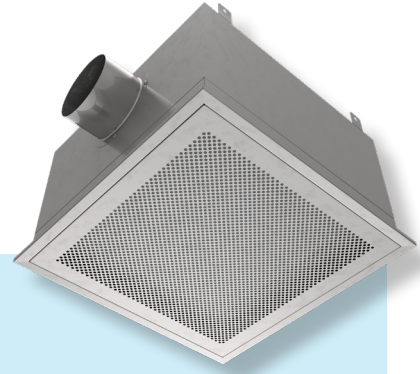
PHARMACEUTICAL HEPA MODULE



DESCRIPTION

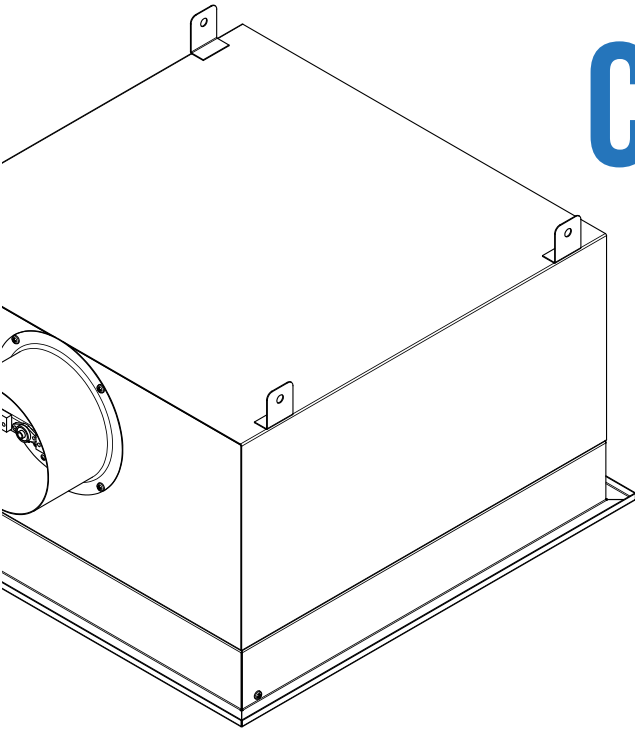
The Pharma-Safe HEPA housing is meticulously designed to meet the stringent demands of the pharmaceutical industry, where maintaining an environment free from airborne contaminants is paramount. Manufactured in Australia, Pharma-Safe complies with AS 4260, AS 1386, and ISO 14644 standards, ensuring best in-class performance and reliability.

Pharma-Safe stands out with several enhancements over the standard HEPA module range, making it particularly suitable for high-value applications. These improvements include advanced filtration technology, robust construction, and enhanced durability, ensuring optimal air purity and safety in critical pharmaceutical settings



SUITABLE FOR:

- Pharmaceutical Cleanrooms
- PC3/PC4 Laboratories
- High-Tech Cleanrooms
- Grid Mounting
- Down-Flow Applications



CONSTRUCTION

MEDIA: The glass-paper filtering medium is pleated into a narrow vee formation and held in place by corrugated aluminum separators inserted between the pleats. This forms the filter element which is bonded into a rigid corrosion-resistant steel frame with all joints encapsulated and sealed in a special urethane elastomer.

HOUSING: Housing: 304 Stainless Steel (316 Optional), fully welded construction with adjustable room side damper and magnetic facia

FACIA: Tool-free removal, stainless steel finish with optimal air opening area.

FILTER: HEPA type, strictly conforming with AS 4260.

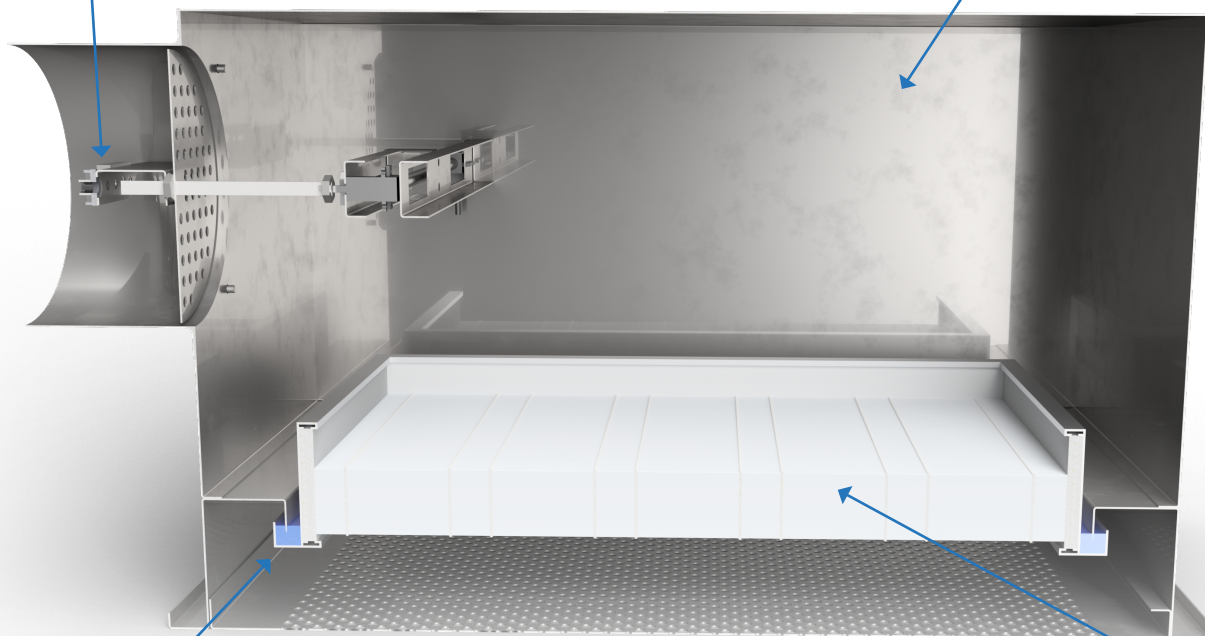
FILTER SEALS: Modules can be supplied with either gasket or fluid seal HEPA filters.

SPIGOT: Optional location, side or top entry

FEATURES

Room Side Adjustable
Damper

Fully-welded
Stainless Steel
Housing



Fluid Seal

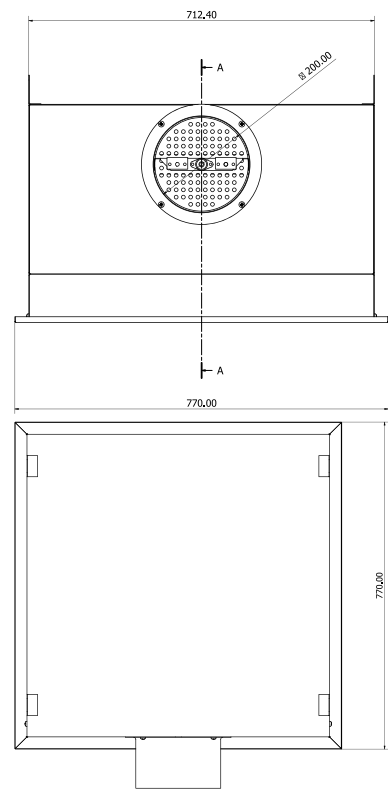
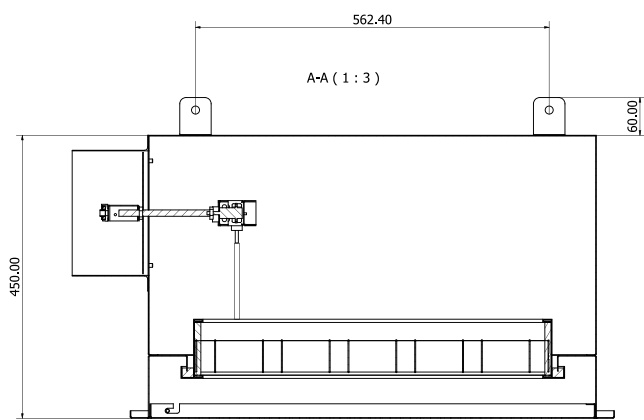
H14 110mm deep
Minipleat HEPA

Magnetic fuss-free
stainless facia with
tool-free access

SPECIFICATIONS

Part No	FACE Dimensions (mm)			HEPA Dimensions (mm)			Airflow L/s	Capacity CFM	Spigot location	Spigot diameter	Weight Kg.
	H	W	D	H	W	D					
1687-1707/100	450	772	772	90	610	610	160	340	TOP	300	40kg
1687-1707/101	450	1076	772	90	914	610	210	445	TOP	300	60kg
1687-1707/102	450	1382	772	90	1220	610	320	675	TOP	300	80kg

DRAWINGS



CERTIFICATION

INSTALLATION

HEPA filter modules must be supported independently from the ceiling structure. The module's power supply must be interlocked with the air conditioning unit in such a way as to start the module fan before starting the air conditioner fan.

ON SITE TESTING

All HEPA filters shall be tested to AS 1807:2021 clause 4.4 (Determination of integrity of terminally mounted HEPA filter installations) or 1807.7 (Determination of integrity of HEPA filter installations not terminally mounted) by AES Environmental or other NATA accredited laboratory.

MAINTENANCE AND SERVICE

To ensure conformity with Australian Standards including AS 4260, AS 1386, and ISO 14644. HEPA filter modules should be inspected and tested on site:

- Prior to use
- On at least an annual basis
- After Maintenance of HEPA filter/module
- After re-location
- When HEPA filter is replaced



AES Environmental maintains an ISO 9001:2015 quality management system to ensure process and product conformance.





AES Environmental is a family owned, engineering and manufacturing business. The company comprises of major brands situated in the Air Filtration, Pollution Control and Life Sciences markets. Those brands and products are market-leading names within their fields ensuring that AES Environmental is capable of fulfilling its goal of providing the market with a single, integrated source for air filtration, clean room and pollution control needs.

Whatever business area you operate in, effective air filtration and pollution control is vital for your products, processes and people. All our products are manufactured in Australia and along with that, we offer installation and service Australia wide, that you can always rely on.

GET TO KNOW US

AES Environmental consists of an Australian head office and manufacturing location in Sydney, NSW, manufacturing and service operations in Perth, WA, Adelaide, S.A. and service operations in Melbourne, Vic. Internationally the business operates manufacturing facilities in Bangkok, Thailand and Newcastle Upon-Tyne, UK.


However large or small the need, with expertise in just about every area of industrial and process filtration and separation, we're ready to help to deliver the products and 'hands-on' support to help you build a better future.


© 2024 AES Environmental | Bulletin No. 23J.01.24 AES354 REV0


In keeping with our policy of continuing product improvement, we reserve the right to alter specifications without notice.


GET IN TOUCH!

AES HEAD OFFICE SYDNEY

 9A Pembury Rd, Minto, 2566

 1300 550 116

 sales@aesenvironmental.com.au

 aesenvironmental.com.au

