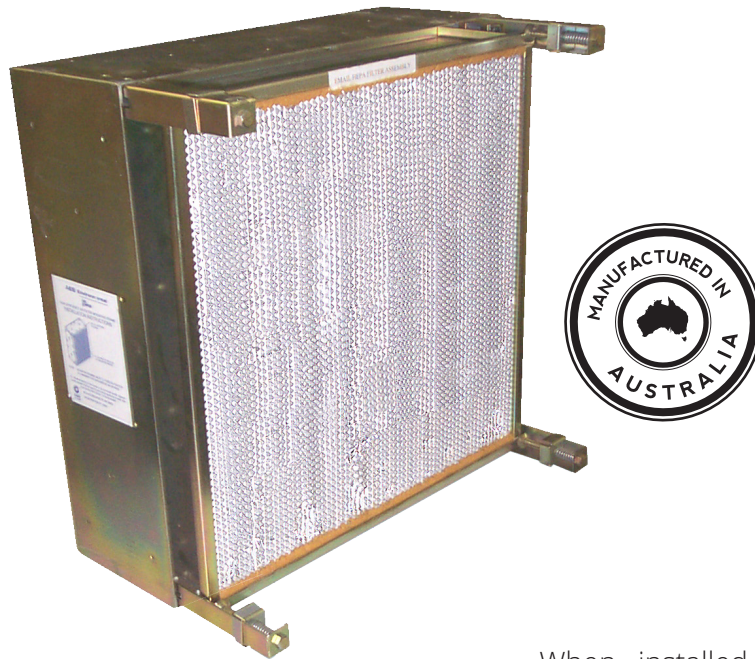


Absolute Type Filter mounting frames



Description

The Email mounting frame system has been designed for use in single or multiple absolute type filter installations.

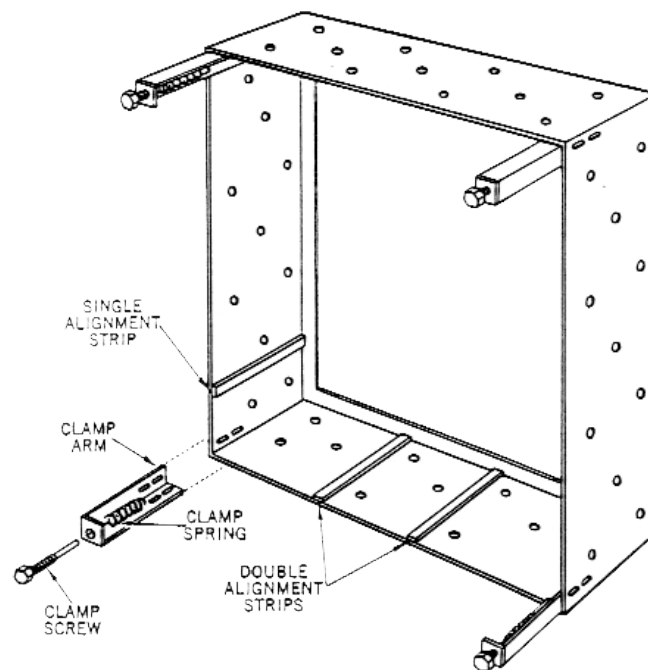
Each 14 gauge zinc-dichromate plated mild steel frame is precision pierced to permit rapid on-site installation with 3/16" diameter solid rivets. Before riveting, all sides of the mounting in contact with other frames or duct housings should be coated with a suitable mastic sealant.

When installed, the side of the mounting frame with double alignment strips should be in the downward position so that the filter will bear evenly against the inside flange.

Each mounting frame is supplied with four removable clamp assemblies which are attached to each inner corner of the mounting frame.

Each clamp assembly comprises a clamp arm, screw and spring. This assembly provides a constant pressure against the filter gasket after the filter is installed and the clamp screw adjusted.

TO SUIT FILTER SIZE (MM)	MOUNTING FRAMES ACTUAL SIZE (MM)	OVERALL DEPTH INCLUDING CLAMPS (MM)	PART NO.
305 x 305 x 149	327 x 327 x 152	267	1589-0010/303
610 x 610 x 149	632 x 632 x 152	267	1589-0010/304
610 x 610 x 292	632 x 632 x 203	406	1589-0010/305
610 x 762 x 292	632 x 784 x 203	406	1589-0010/306
610 x 762 x 149	632 x 784 x 152	267	1589-0010/307
610 x 1219 x 149	632 x 1241 x 152	267	1589-0010/309



This constant pressure compensates for any set or deformation the gasket may experience after initial installation and ensures a constant seal at all times.

© 2018 AES Environmental | Bulletin No. 06J.01.17 AES119 REV1

In keeping with our policy of continuing product improvement, we reserve the right to alter specifications without notice.

AES ENVIRONMENTAL



9A Pembury Rd, Minto 2566
 Ph 1300 550 116 F 1300 550 117
 sales@aesenvironmental.com.au
 www.aesenvironmental.com.au

